

Developing Auckland

QMCA Breakfast – 31st August 2018



Peter Cunningham
Infrastructure & Environmental Services

BE THE HOW.
WHAKAMAUA KIA TINA!



Our Two Great Cities

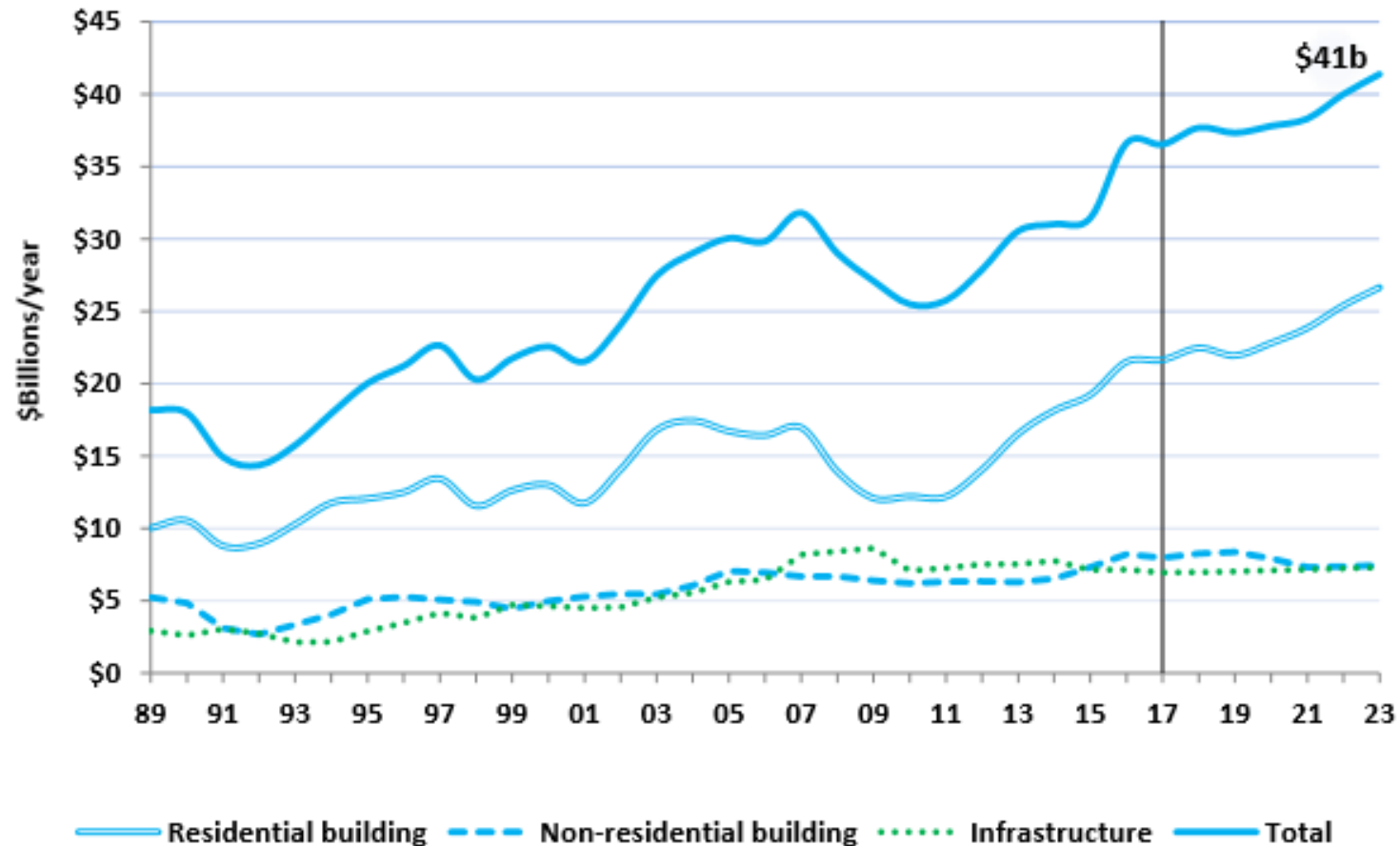


www.jerseyday.com.au

BE THE HOW.
WHAKAMAUA KIA TINA!



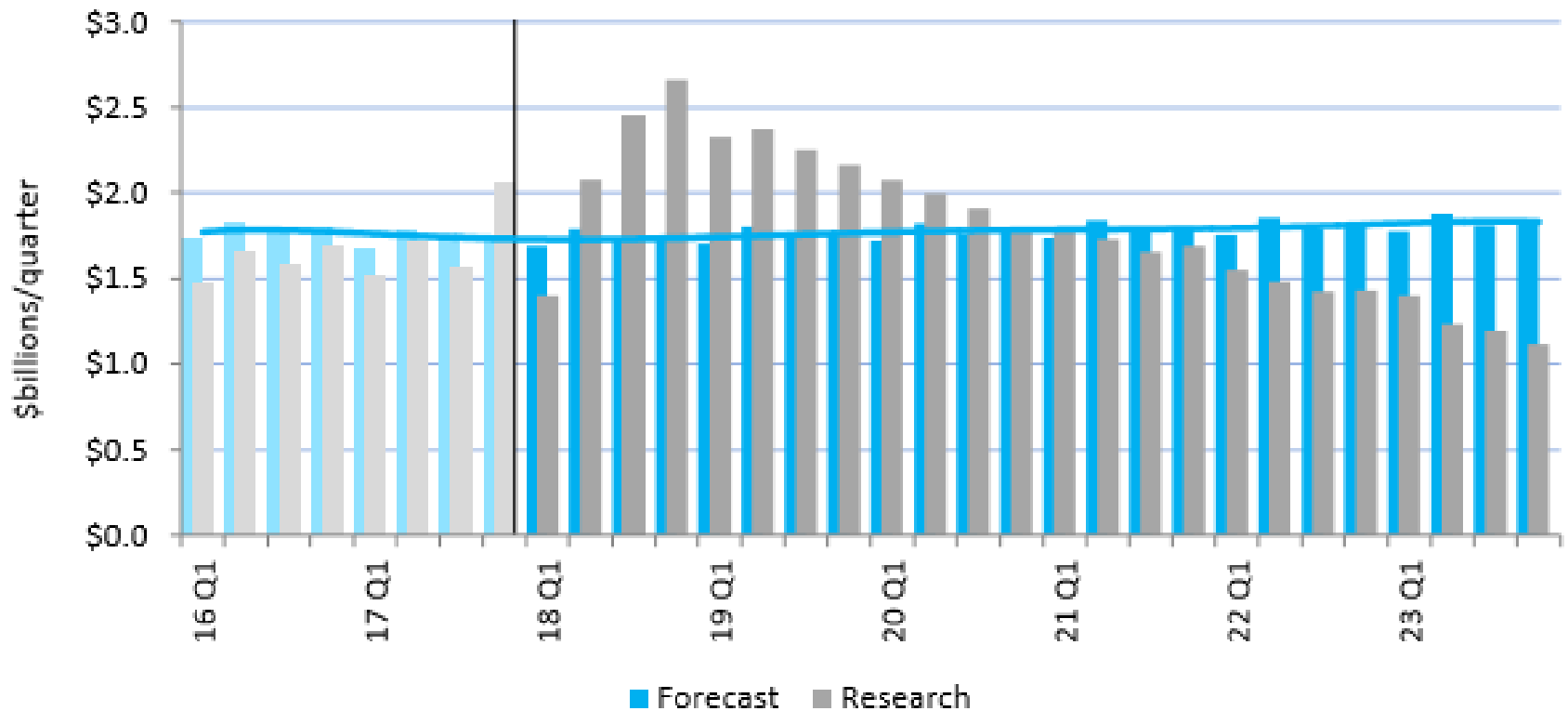
National Pipeline



Source: BRANZ/Pacifecon/Statistics New Zealand

BE THE HOW.
WHAKAMAUA KIA TINA!

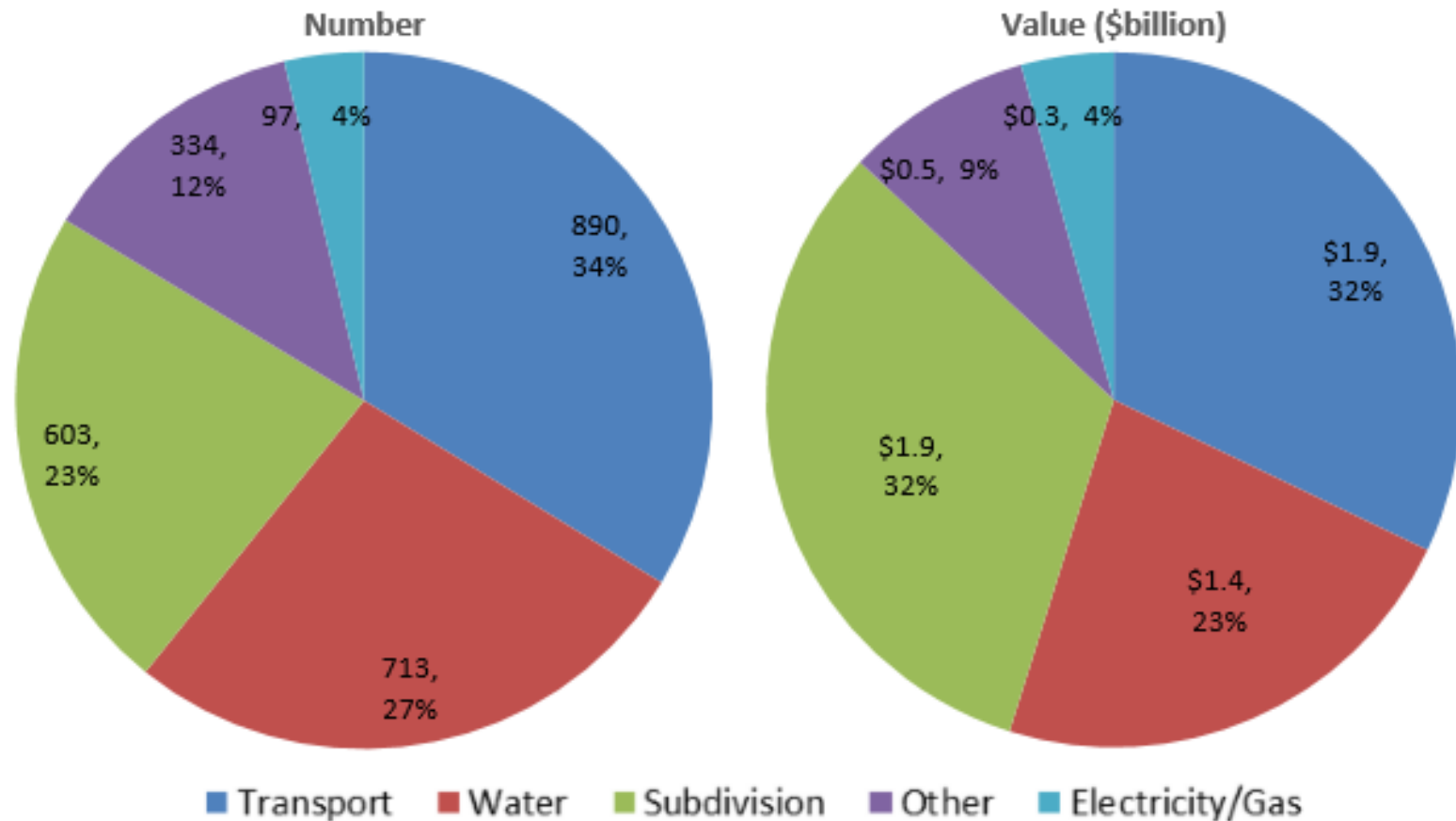
National Infrastructure Activity



Source: BRANZ/Pacifecon

BE THE HOW.
WHAKAMAUA KIA TINA!

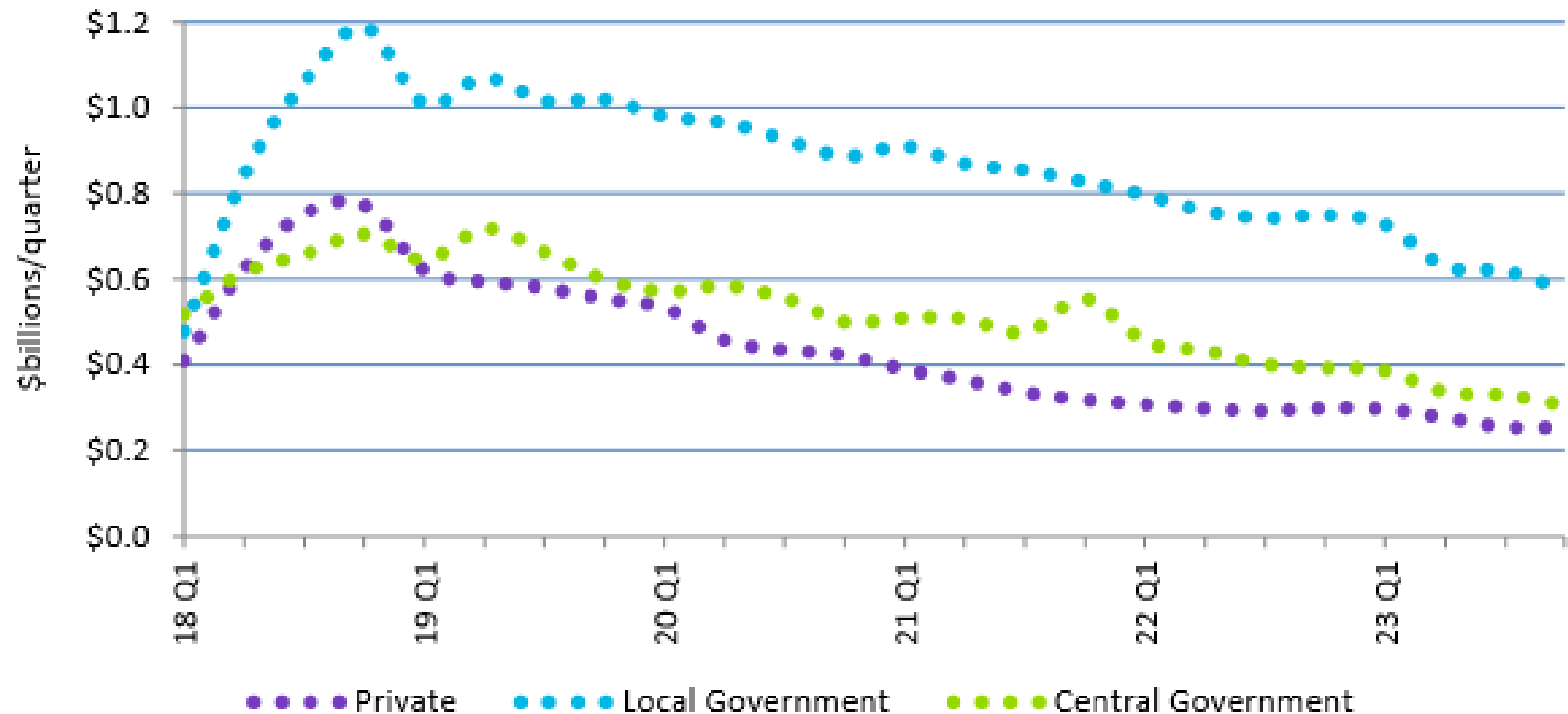
Infrastructure Project Type



Source: Pacifecon

BE THE HOW.
WHAKAMAUA KIA TINA!

Infrastructure Initiators

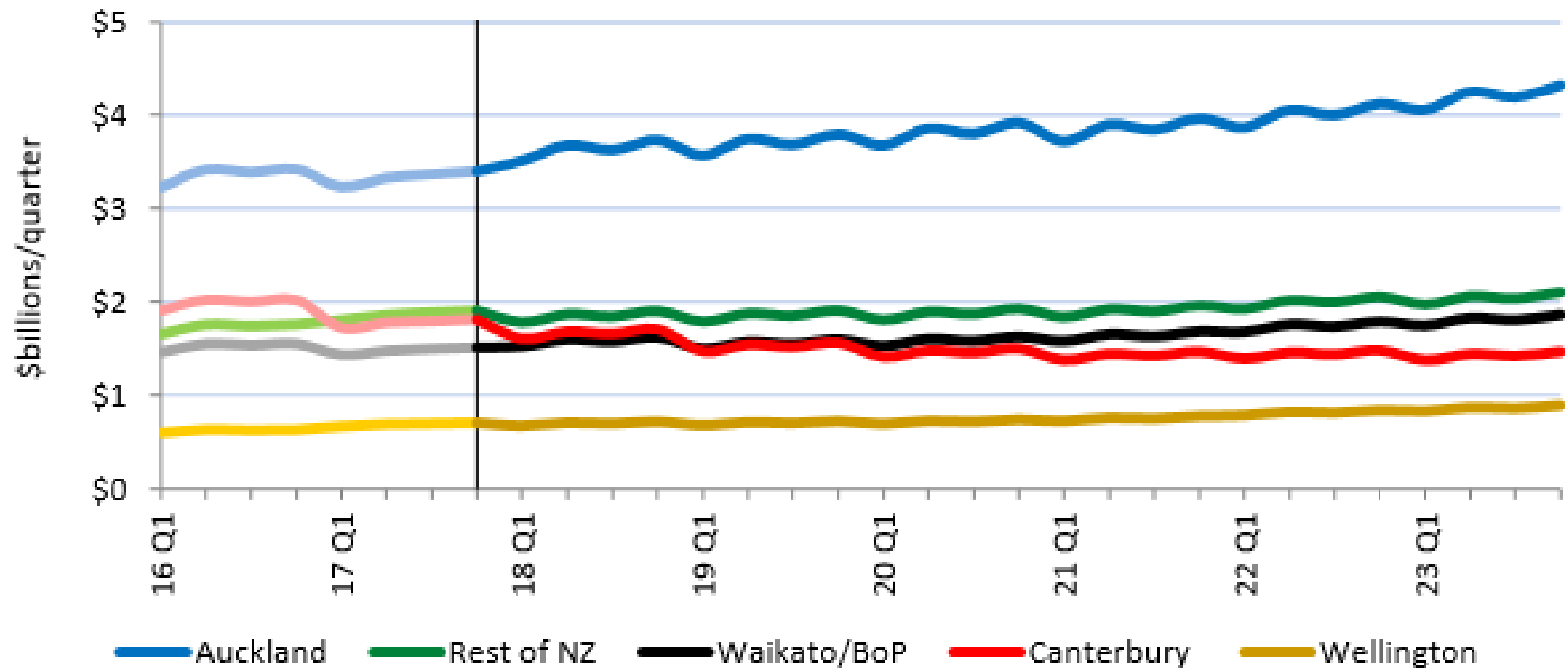


Source: Pacifecon

BE THE HOW.
WHAKAMAUA KIA TINA!



Value by Region



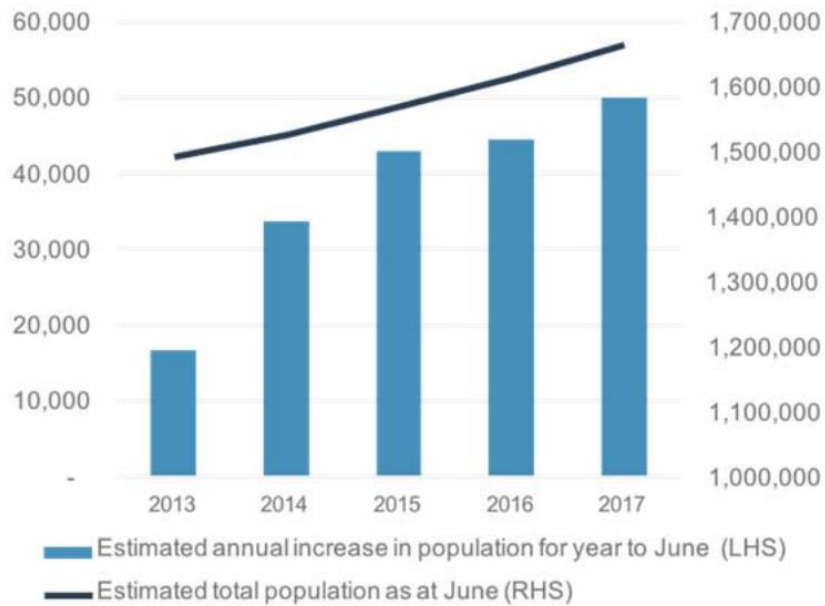
Source: BRANZ/Pacifecon

BE THE HOW.
WHAKAMAUA KIA TINA!

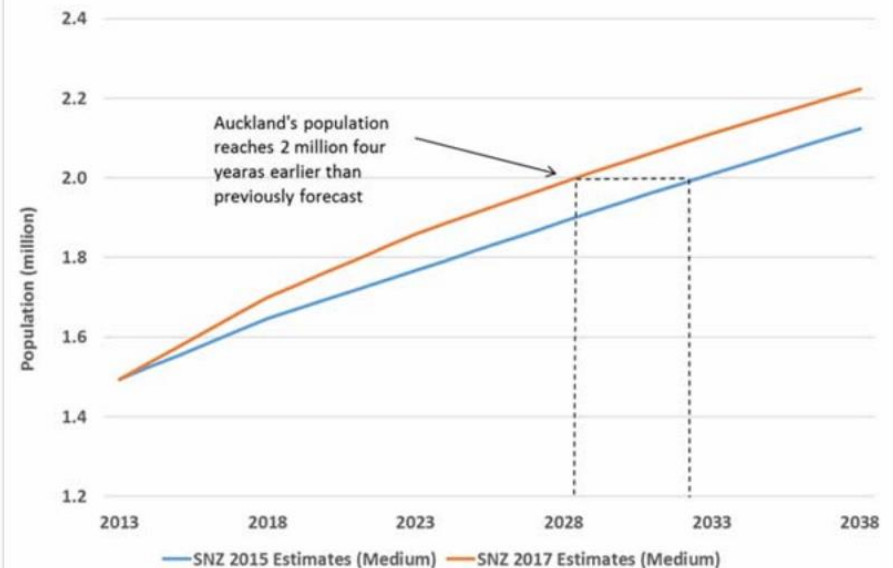


Auckland's Growth

Recent increase in Auckland's population



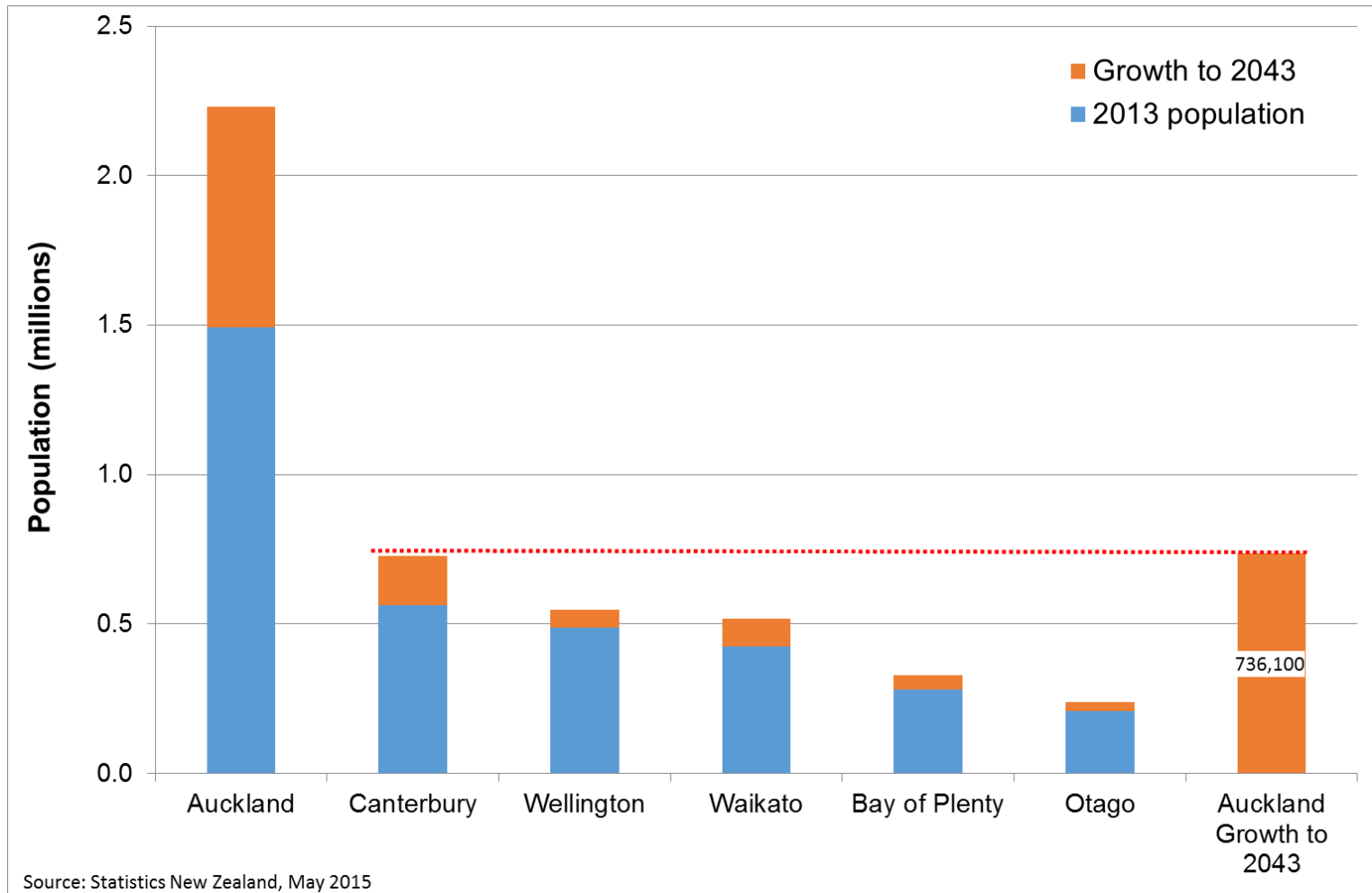
Auckland Growth Predictions



BE THE HOW.
WHAKAMAUA KIA TINA!



Auckland's Growth



BE THE HOW.
WHAKAMAUA KIA TINA!



Auckland's Growth

- Increases in Auckland's population is creating flow on impacts
- Each week population growth would typically...

825
New residents



137
Additional
seniors over 65



2.5
New doctors



472
New jobs



52
Additional students



17 or 3.5
Additional buses or
trains filled



278
New dwellings
required



2
New teachers



825
Additional cars
on our roads



39
Equivalent to thirty
nine Metropolis
buildings every 12
months



1
New school required
every nine weeks



3
Every seven weeks
filling an additional
three motorway
lanes in peak hours

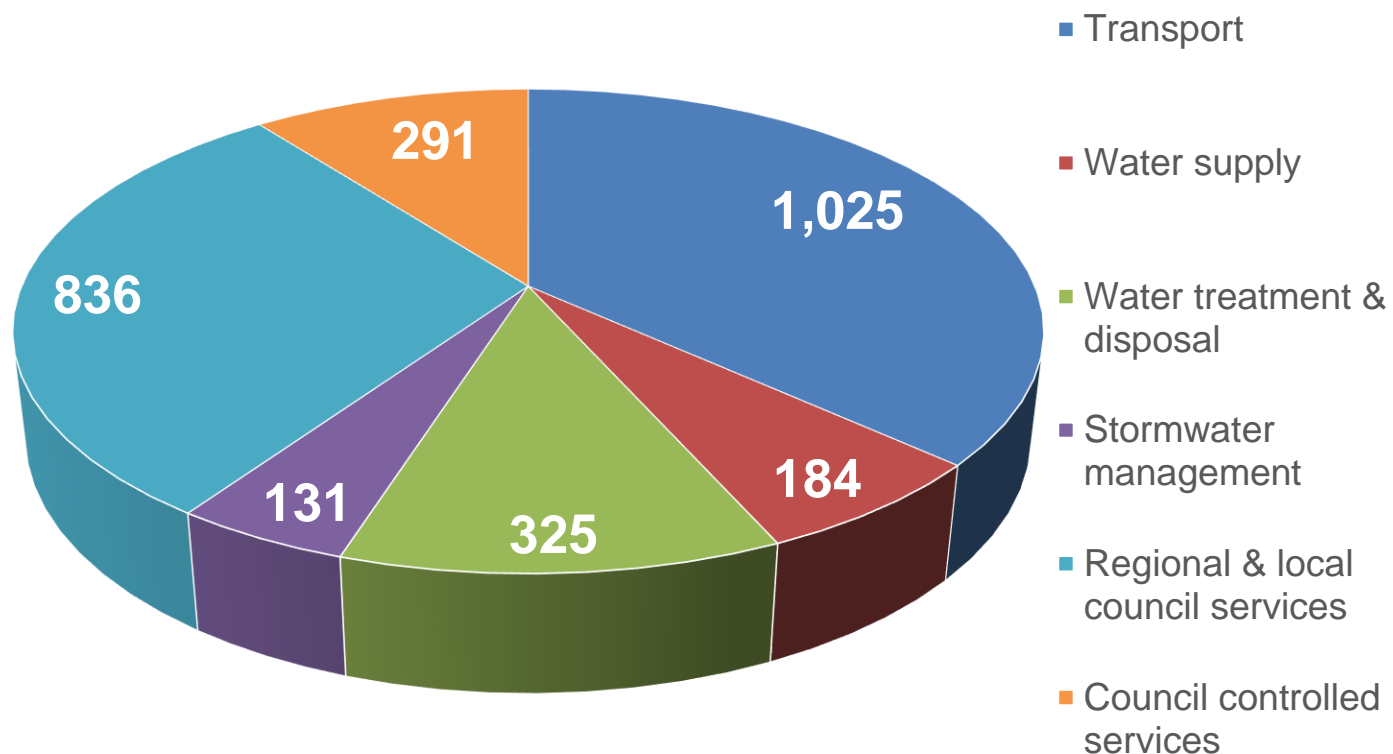


BE THE HOW.
WHAKAMAUA KIA TINA!



Council Group – Capital Spend FY18-19

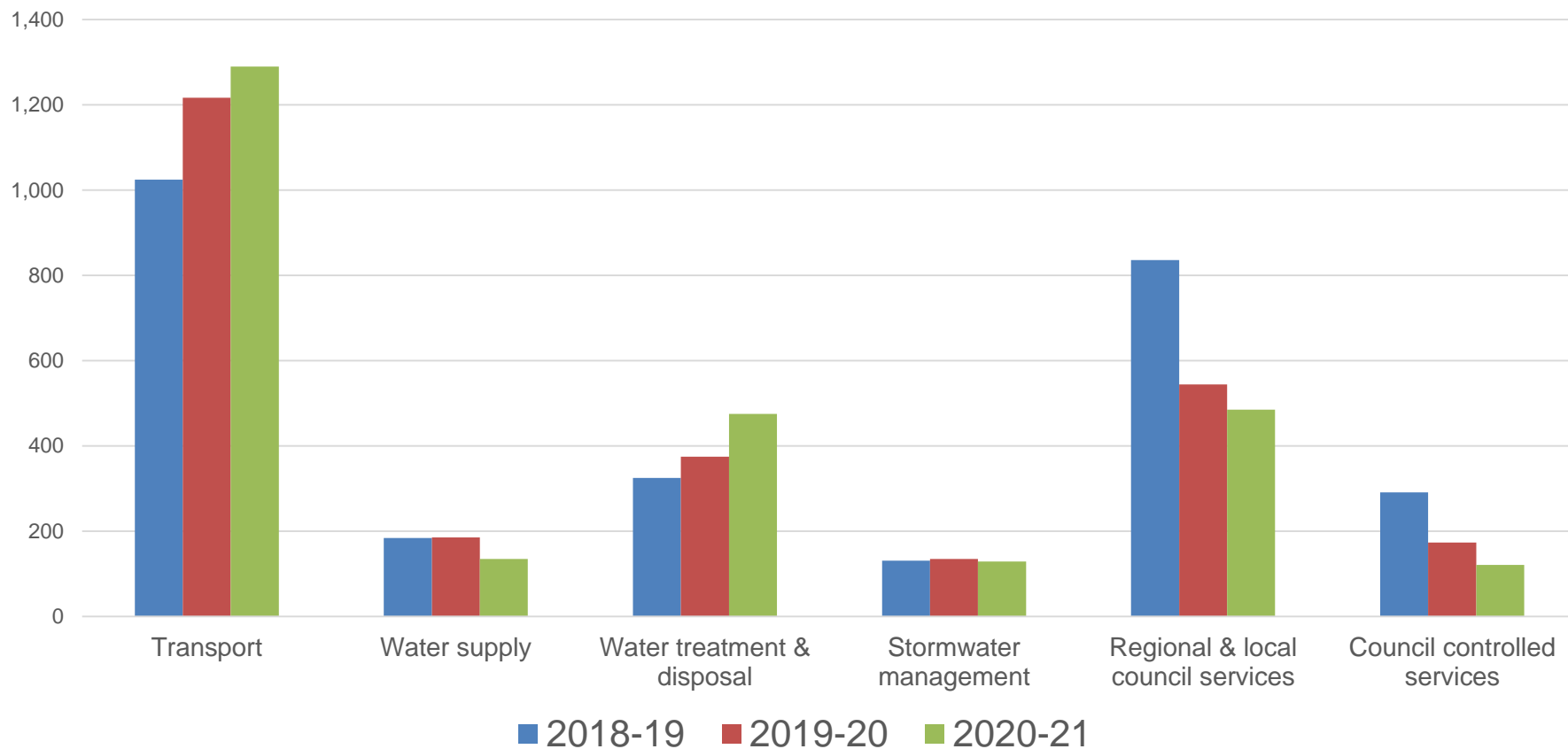
FY2018-19 Capex Spend (\$M)



BE THE HOW.
WHAKAMAUA KIA TINA!

Council Group – 3 Year Outlook

FY18-21 Capex Spend (\$M)

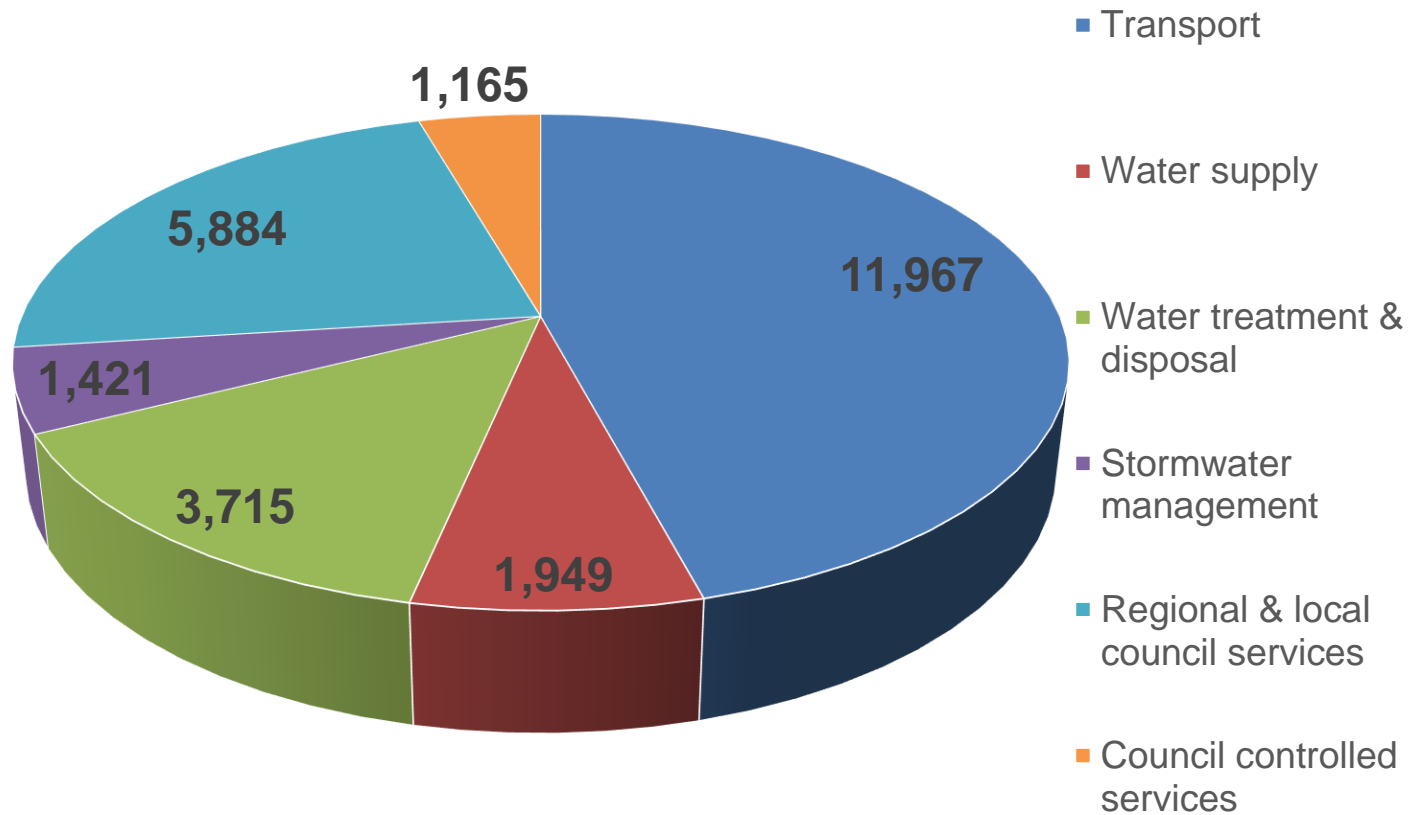


BE THE HOW.
WHAKAMAUA KIA TINA!



Council Group – 10 Year Outlook

FY2018-28 Capex Spend (\$M)



BE THE HOW.
WHAKAMAUA KIA TINA!



America's Cup & City Centre Programmes

City Centre Scenarios map of specific projects per scenario

Years 1-3

- 1 Albert St Upgrade (public Realm) (2019-2023)
- 2 Britomart East Bus Interchange
- 3 Britomart Precinct Streetscapes
- 4 Downtown Public Spaces - Areas 1 & 2
- 5 East West Pedestrian St
- 6 Eastern Viaduct Safety Improvements
- 8 Federal St Stage 2
- 9 Federal St Stage 3
- 11 Learning Quarter Bus Interchange
- 12 Lower Albert St Bus Interchange
- 13 Lower Albert to Lower Queen
- 14 Lower Queen St Upgrade
- 15 Lower Queen to Commerce
- 17 Karangahape Road (Public realm)
- 18 Myers Park Underpass (Stage 2b)
- 19 NZOC Frontage
- 20 Phase 2 Cruise - Dolphin
- 22 Quay St Seawall
- 23 Westhaven Package
- 24 Stage 1 Hobson/Nelson
- 25 Viaduct to Lower Albert
- 27 Wellesley St Bus Corridor
- 28 Wyndham St - Queen to Albert St
- 29 Wynyard Common/Daily Linear Park
- 33 Queens Wharf (post cloud) Stage 1
- 30 Britomart East Bus Interchange Amenity
- 31 Stormwater outfall within the Ferry basin
- 32 Downtown Ferry Terminal Redevelopment Phase 1
- 34 St Marys Bay upgrade/city beach
- 36 Wellesley St - Amenity Uplift
- 37 Wynyard Crossing Replacement
- 44 Mayoral Drive - Wellesley to Vincent
- 38 Bascule Bridge repairs
- 39 Commerce Street South -
- 40 Customs East (Queen to Britomart)
- 41 East West Pedestrian St Stg 2
- 42 Gore Street South -
- 43 Marine Industrial Seawall/remediation
- 45 Toi Whero Island upgrade

\$290m
BASE

+\$155m
= \$445

+\$125
= \$570

Years 4-10

- 47 Beresford Square
- 48 Cross Street
- 49 High St Streetscapes
- 50 Stage 1 Vic Linear Park
- 51 Breakwater
- 52 Hammer Street Upgrade
- 53 Headland park
- 54 Headland Linear Park
- 55 Lower Hobson St Flyover
- 56 Queen St Pedestrianisation
- 57 Sea Wall - Headland seawall
- 58 Stages 2-3 Vic Linear Park
- 46 Fanshawe Street Amenity Enhancement
- 65 Phase 3 Cruise Infrastructure
- 67 Downtown Ferry Terminal Phase 2
- 59 Stages 4-6 Vic Linear Park
- 59 Customs West - Queen to Albert
- 60 Events Centre/Cruise Facility
- 61 Ferry terminal public space
- 62 Queens Wharf Western Public Space Stage 2
- 63 Shed 11 and surrounds
- 64 Stages 2-4 Hobson Nelson
- 66 Downtown Spaces - Area 3 - Admiralty

\$82m
BASE

+\$395m
= \$477

+\$107m
= \$594

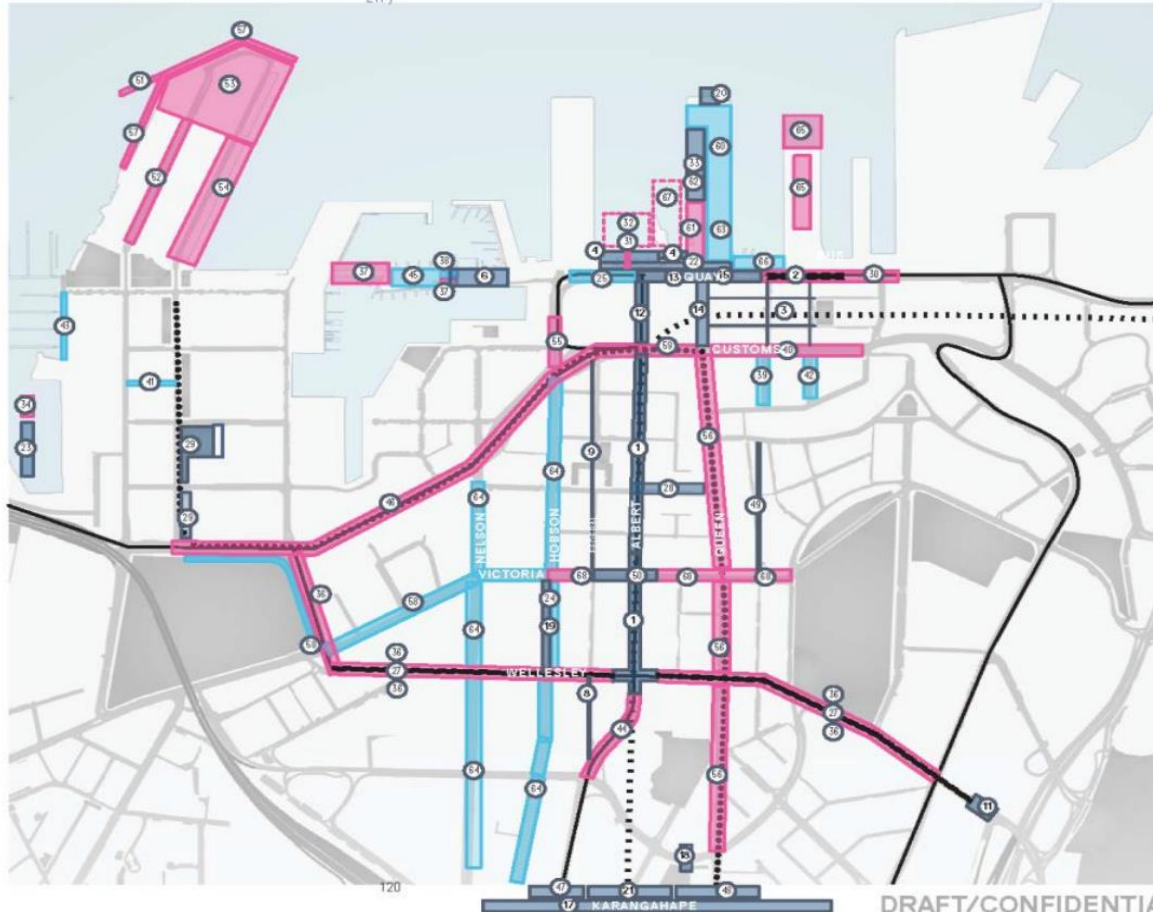
REGIONAL NETWORKS
New Bus Infrastructure
New Bus Route
CRL Route
MRT Route



Currently Funded Base Case
\$372m (\$188m Targeted Rate & \$184m LTP)

Scenario 1: Progressing the Vision
\$922 (Base + \$550m)

Scenario 2: Delivering for the future
\$1164m (S1 + \$242m)



DRAFT/CONFIDENTIAL

BE THE HOW.
WHAKAMAUA KIA TINA!

City Rail Link



Project stages in the city centre

- Britomart (Contract 1) *Due to be complete around 2020*
- Albert Street (Contract 2) *Due to be complete by late 2019*
- Aotea, Karangahape and Mt Eden stations and the tunnels connecting them (Contract 3) *Due to be complete by March 2024*

BE THE HOW.
WHAKAMAUA KIA TINA!

Challenge & Opportunity

- Market capacity & resource availability
- Shifting parts
 - Traditional to collaborative procurement
 - Open to closed tenders
 - ECI and alliance models now being used
 - Insurances, contracts, risk, bonds, retentions
 - Associated behaviours required
 - Programme visibility/market engagement

AUSTRADE - AUCKLAND

AUSTRADE: Assists Australian companies assess and enter new markets

**Philippa Hawken
Senior Business Development
Manager (SBDM)**

**Lvl7, PWC Tower, 188 Quay Street, Auckland, New Zealand
T +64 9 9218805 | F +64 9 9218820 | M +64 21 2222805
philippa.hawken@austrade.gov.au | www.austrade.gov.au**

