



Jeremy Christoforatos

RSM at PlanGrid |
jeremy@plangrid.com



Transforming Construction with Mobile Productivity Software

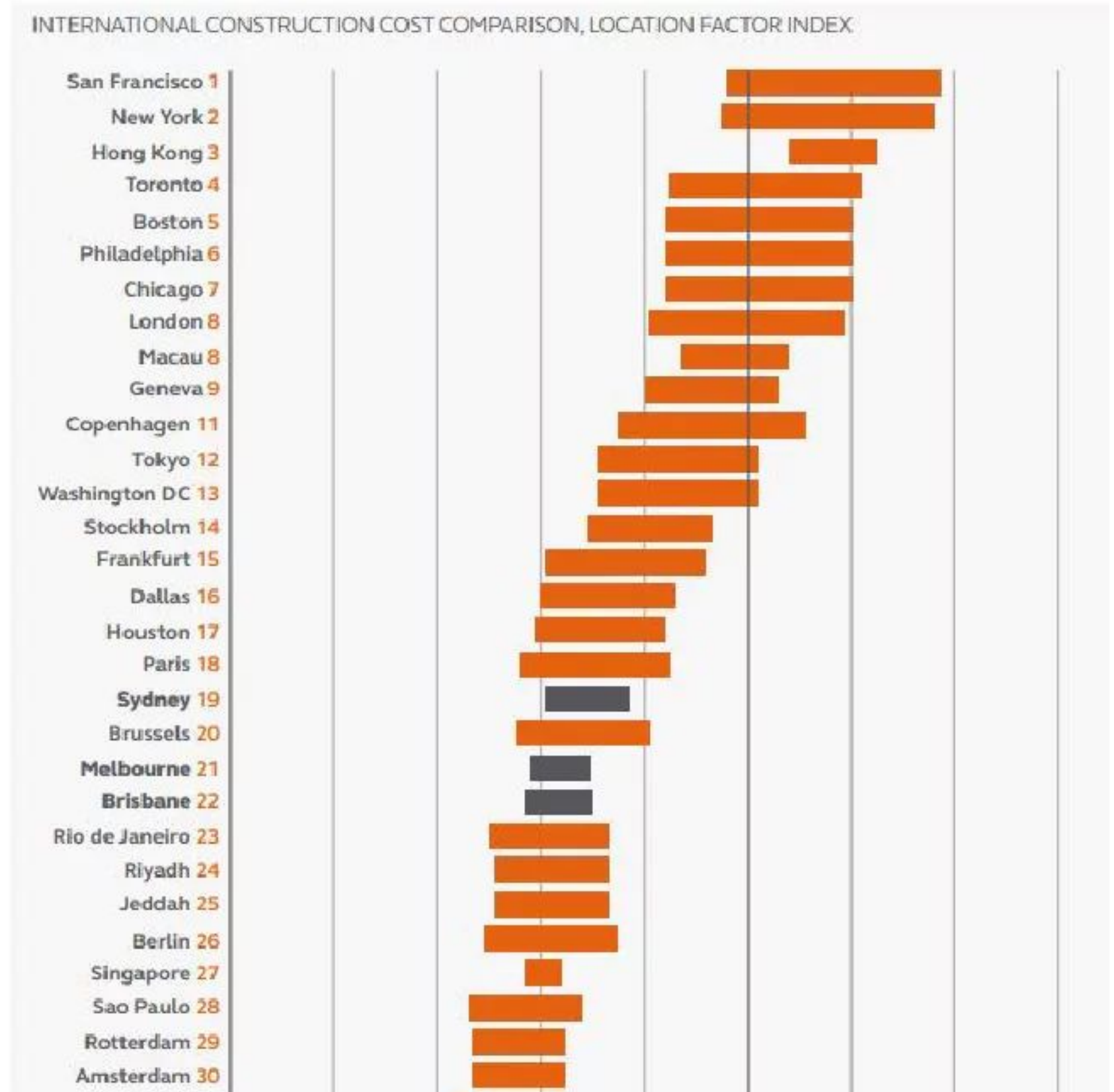
Jeremy Christoforatos
Regional Sales Manager



Donley's
East 89th St. Garage

Australia's Construction Market is Expensive

- Top 20 most expensive cities to build globally:
 - Sydney
 - Melbourne
 - Brisbane
- Projects increasing in size, scope, complexity, and costs
- Labour Costs: \$80-\$220/hr AUD
- Alternative, Collaborative Delivery Methods increasing abroad:
Design-Build, IPD, P3



Significant Wasted Labour & Rework



ANZ will spend

>\$50 Billion AUD

in labour costs on non-optimal activities in 2018.

33% of labour activities spent on non-optimal activities

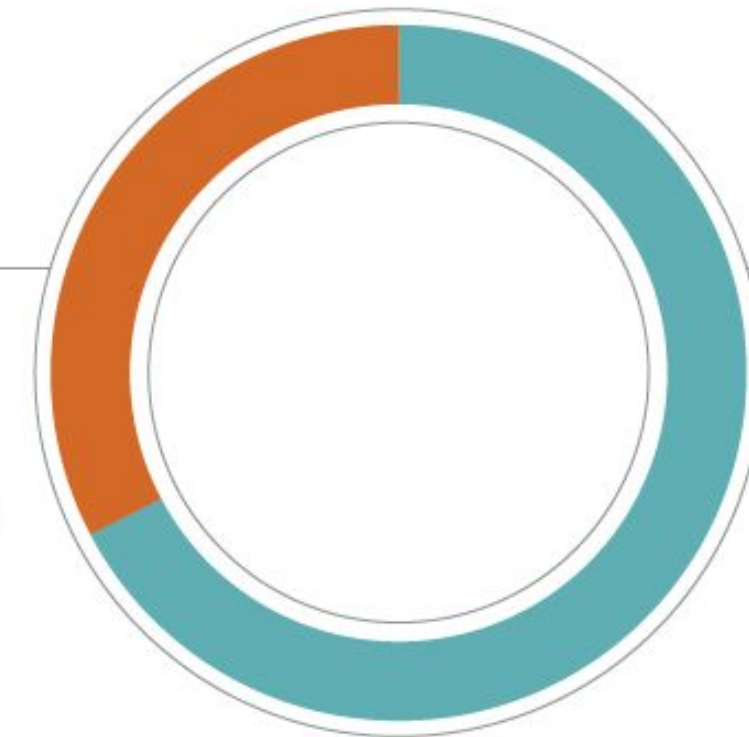
- | Mistakes and rework
- | Conflict resolution
- | Looking for project/data information

Where is Time Being Wasted?

Construction professionals spend

33%

of time on non-optimal activities.



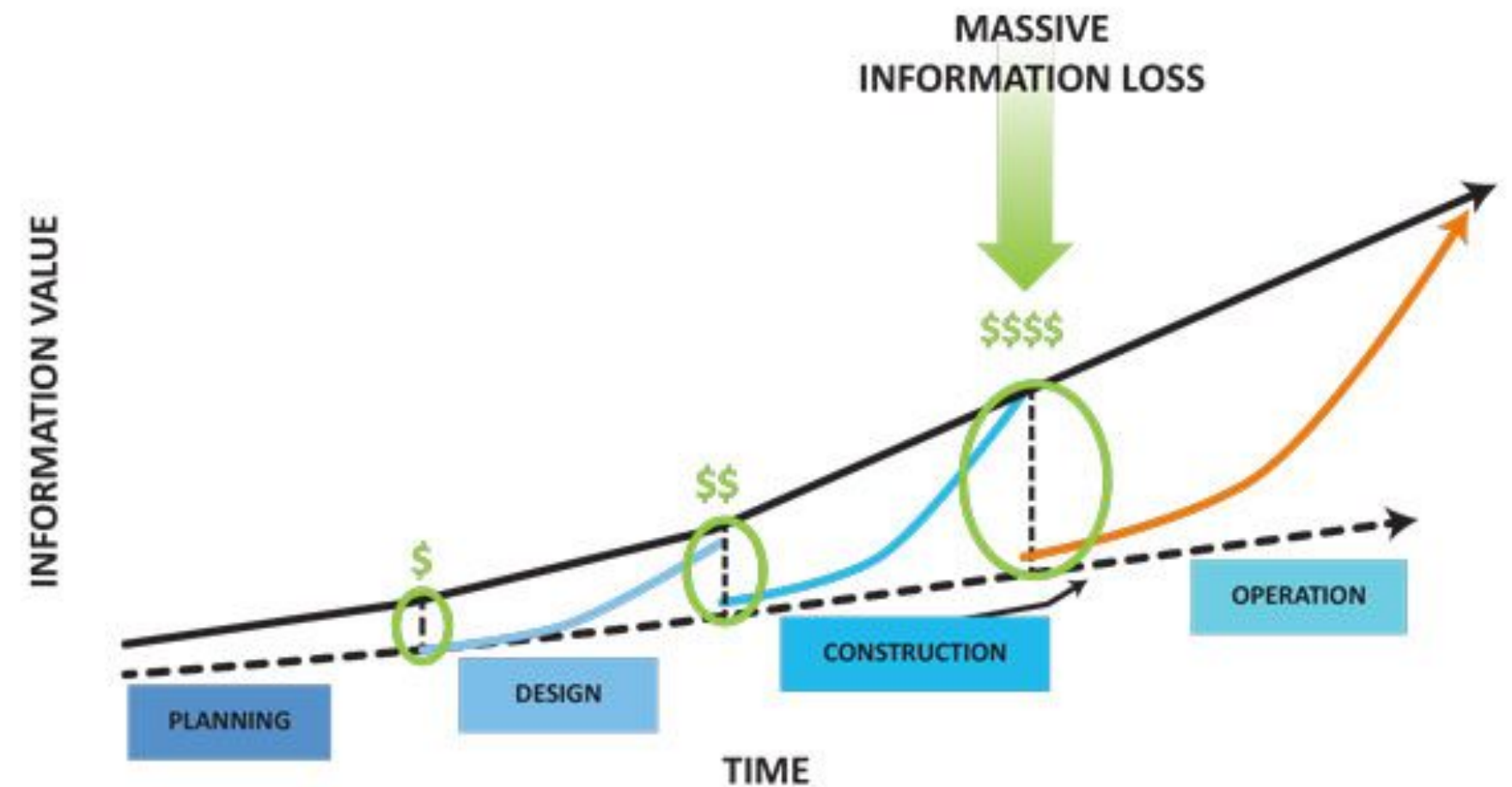
Only

67%

of their time is spent on optimal activities.

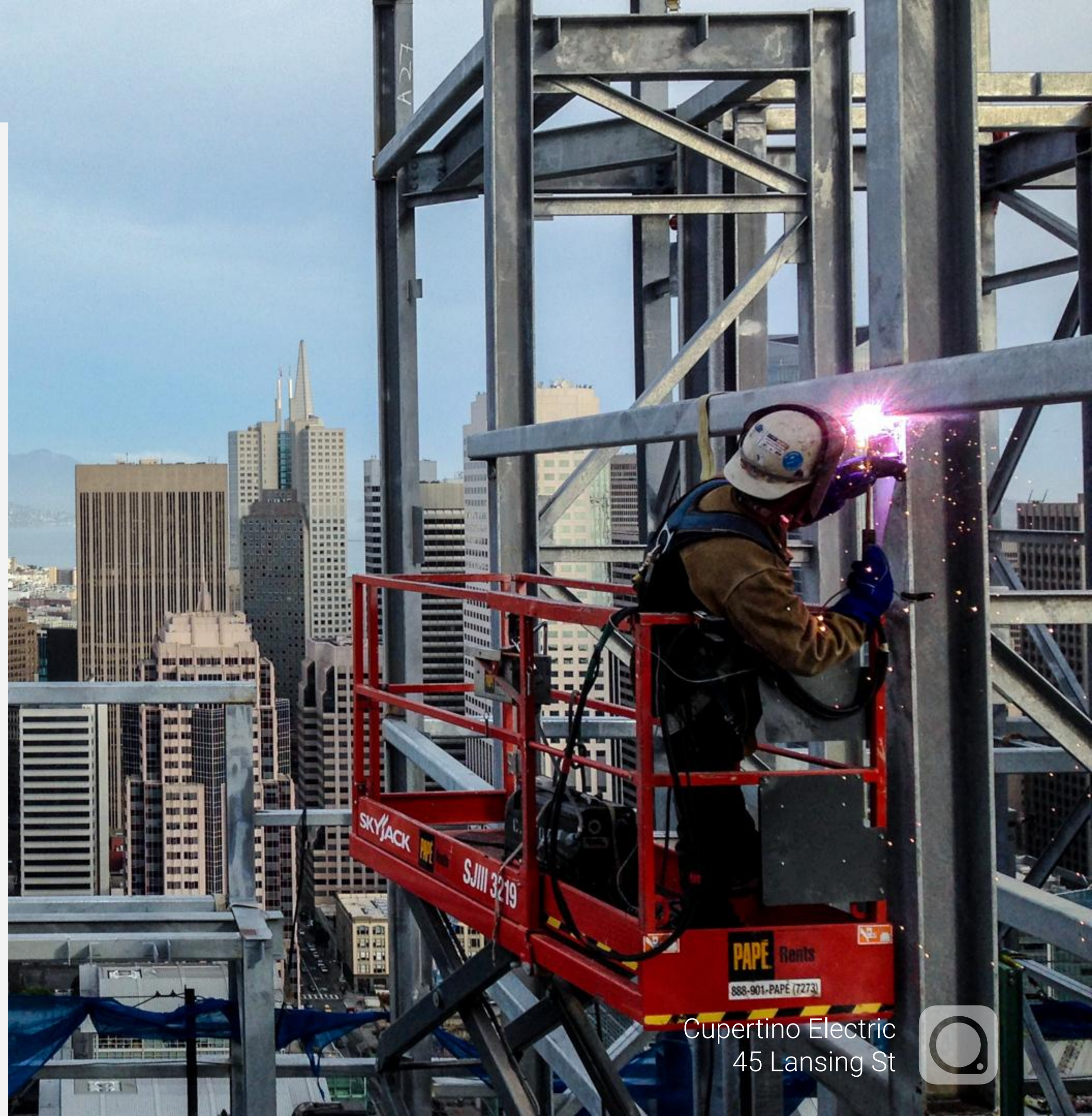
Significant Lost Data from Construction to Handover

- Up to 30% of data is lost at turnover. This leaves facilities teams to kick off their new asset in the dark.
 - Studies show that having this data can reduce time spend on repairs by 60-70%.
- Direct O&M costs can be up to 3x the building cost over 30 years.



What needs to change?

- | Reduce trips to site office
- | Reduce time spent looking for the right information
- | Eliminate building off outdated information in field
- | Eliminate paper + manual entry
- | Increase time on-site
- | Increase collaboration
- | Increase the fun!



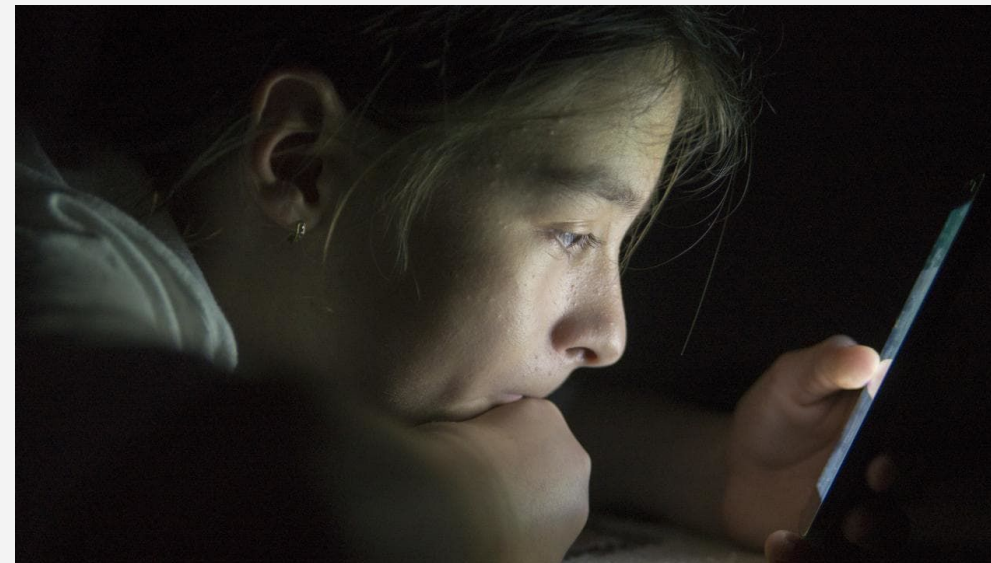
Generations & Technology

Kids 1-12 years



- **300 hours** of video is uploaded to YouTube every minute!
- Almost **5 billion videos** are watched on YouTube every single day.

Adults 13-60 years



- Instagram per day
- 55 million photos** are uploaded
 - 86.4 million comments** are posted
 - 691.2 million likes** on those pictures

Seniors >60 years



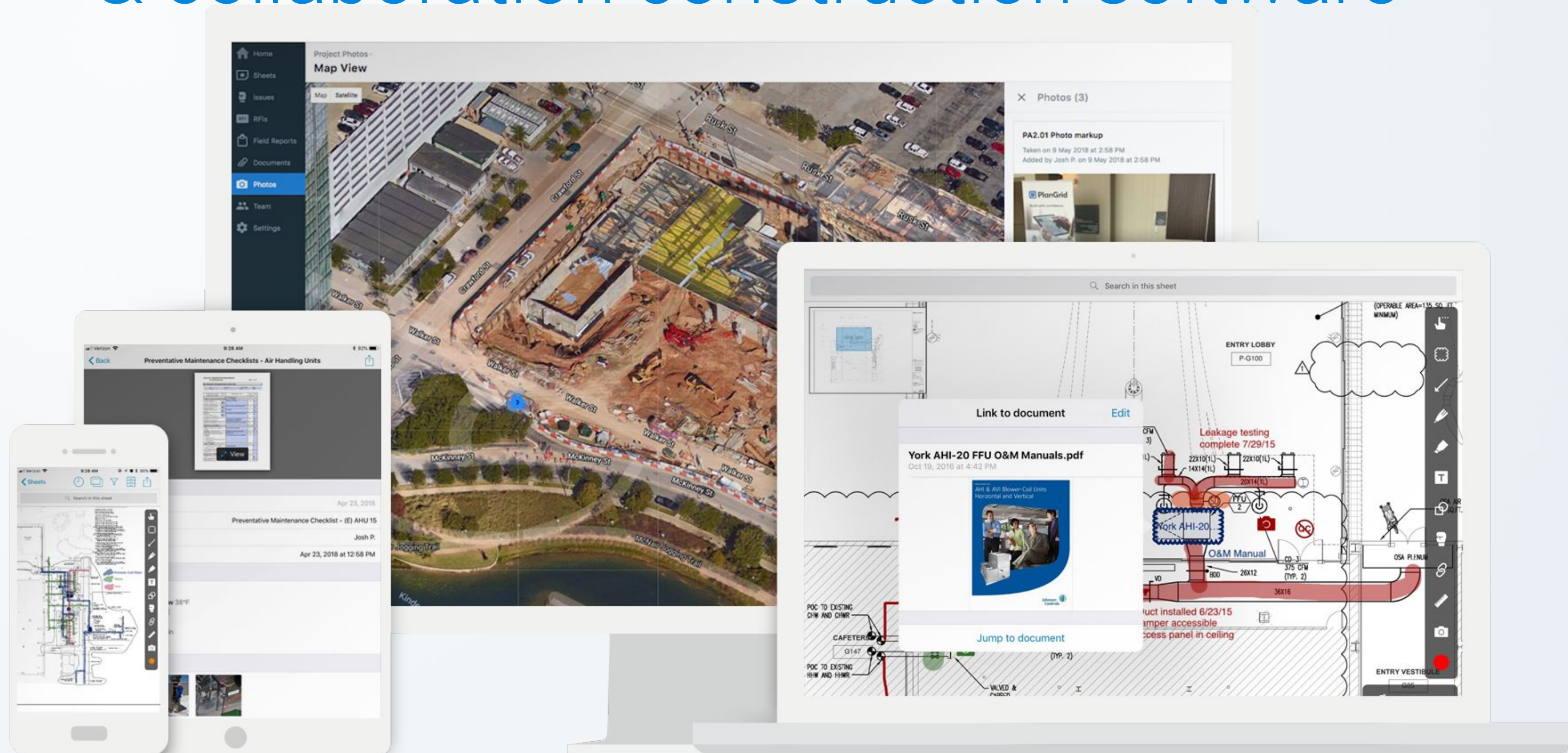
- According to official Google statements, more than **50 percent** of search queries globally now come from mobile devices.
- **40000** Searches Per Second

2010

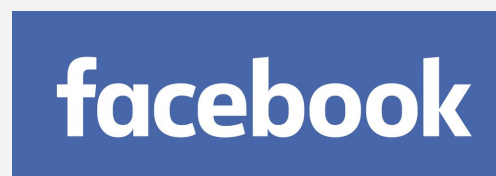
Launch of the iPad



Welcome to PlanGrid: the leader in productivity & collaboration construction software



Owners rely on PlanGrid



What makes PlanGrid special?

- ✓ Proprietary Mobile Platform for Fast Access to Drawings, Specs, Field Reports, Project Documents
- ✓ Access on all mobile platforms, web, and desktop
- ✓ Proprietary Offline Mode for seamless access
- ✓ Google Search for Drawings: Online and Offline
- ✓ Automated and Custom Filtering of Project Data
- ✓ Automated Version Control
- ✓ Automated Detail Hyperlinking
- ✓ Data portability for client at turnover

 ★ ★ ★ ★ ★ 4,464 ratings

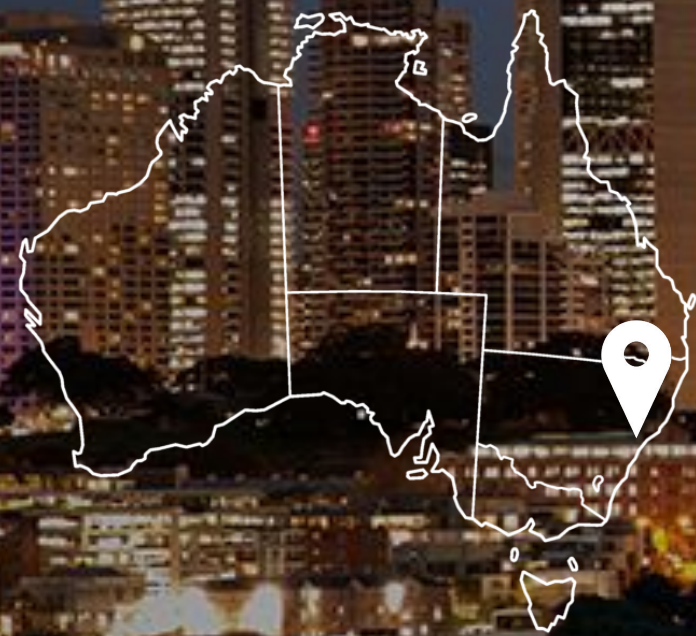
 ★ ★ ★ ★ ★ 2,183 ratings



Crown Sydney

Crown Sydney is a casino and hotel that is currently under construction in Barangaroo, Sydney, Australia. When it opens in 2020, it will be the second legal casino in Sydney (the other being The Star). However, unlike The Star, Crown Sydney's casino will only operate with VIP membership restrictions. With 75 floors and a height of 271.3 m (890 ft), it will become the city's tallest building, surpassing Chifley Tower.

Broke ground
October, 2016



Melbourne Skypark

This visionary park in the sky will be a unique experience in the CBD set to offer workers the ability to re-charge or work outside the office, to enhance their health and wellbeing, a key trend in global workplace design. The Melbourne Skypark will also be a space that can be enjoyed by the general public, much like New York's High Line.



Western Sydney Wanderers Stadium



Stowe Australia since 1910

UTS Central - Upgrade



Emerald Hills Shopping Centre





Jeremy Christoforatos
RSM at PlanGrid |
jeremy@plangrid.com



Thank you
