



ARTC

INLAND
RAIL

An Australian Government Initiative

Inland Rail

Enhancing Australia's supply chain efficiency

QMCA Networking Breakfast:
Queensland's Rail Renaissance

Rebecca Pickering
Inland Rail Chief Executive – Interim
19 November 2021

ACKNOWLEDGMENT OF COUNTRY

Inland Rail acknowledges
the Traditional custodians of
the land on which we work,
and we pay our respects to
Elders past and present.



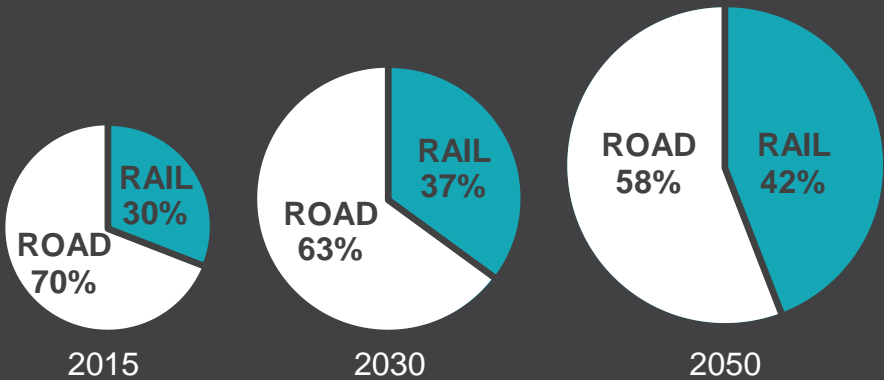
Creating a new reality
for Australia and a
more prosperous nation



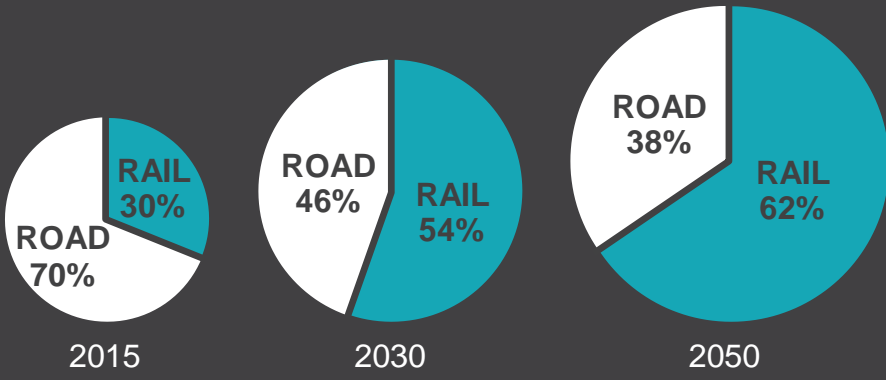
Connecting Australia
into a faster, safer,
more reliable freight
rail network

SUPPLY CHAIN EFFICIENCY

MOVING FREIGHT WITHOUT INLAND RAIL



MOVING FREIGHT WITH INLAND RAIL

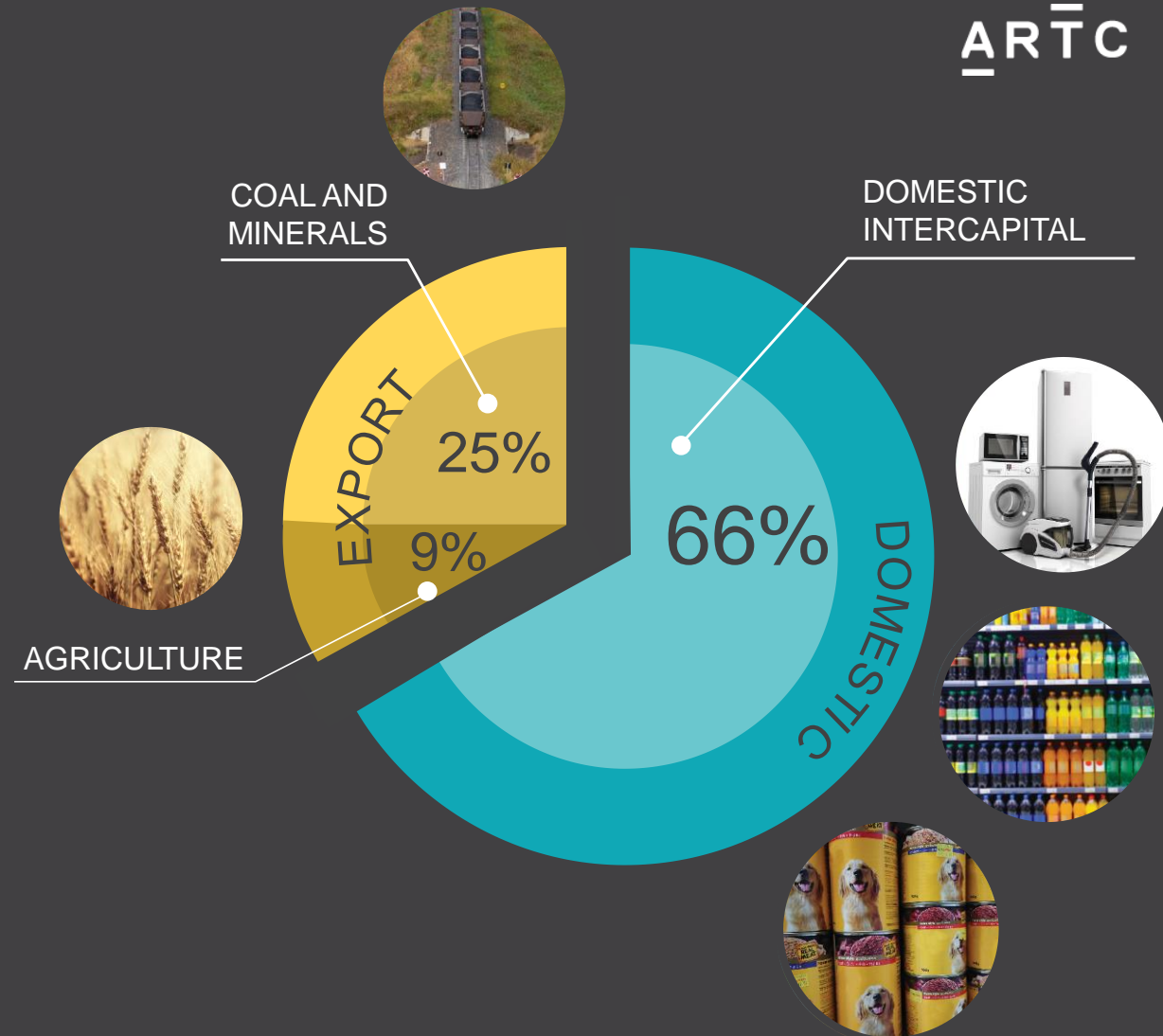


SAFER, LESS CONGESTED ROADS

Forecast intermodal tonnage percentages on Inland Rail:
Melbourne – Brisbane; Brisbane – Adelaide/Perth

DOMESTIC NEEDS DRIVE ALMOST 70% OF THE BUSINESS

Freight demand is expected to increase by **60% over the next 40 years**, driven largely by population growth in South-East Queensland and Victoria



A MAJOR BOOST FOR QUEENSLAND



* Revised analysis by PricewaterhouseCoopers December 2020

SEGMENTS, PROGRAMS AND PACKAGES

Segment	K2ARB	C2K	H2C	G2H	B2G	NS2B	N2NS	N2N	P2N	S2P+	I2S	A2I+	T2A
Works Program					Northern Works Program	Central Works Program			Southern Works Program				
Works Package		G2K			Package 4 (N3) Package 3 (N2) Package 2 (N1) Package 1 (N4)	Package 4 (C4) Package 3 (C3) Package 2 (C2)	SP1 - In construction (Construct Only) Package 1 (C1)	Package 4 (S4) Package 3 (S3) Package 2 (S2) Package 1 (S1)	Completed (Construct Only)	S2P+	I2S	A2I+	Being developed and delivered by MPV
Delivery Model	TBC	PPP			Collaborative ITC D&C	Collaborative ITC D&C		Collaborative ITC D&C		D&C	D&C	D&C	

Rail Corridor Program (Materials & Logistics, Rail Systems)

Rail Corridor Package

Notes:

+ The A2I and S2P projects are likely to be combined as one package.
Package battery limits and sequencing are subject to change.

CENTRAL CIVIL WORKS PROGRAM

Segment	North Star to NSW/Qld Border			Narrabri to North Star	
Works Package	Package 4	Package 3	Package 2	Phase 1 (Construct Only)	Package 1
Delivery Model	Collaborative ITC D&C			In construction	



NORTHERN CIVIL WORKS PROGRAM

Segment	NSW/Qld Border to Gowrie			
Works Package	Package 4	Package 3	Package 2	Package 1
Delivery Model	Collaborative ITC D&C			



PUBLIC PRIVATE PARTNERSHIP

GOWRIE TO KAGARU

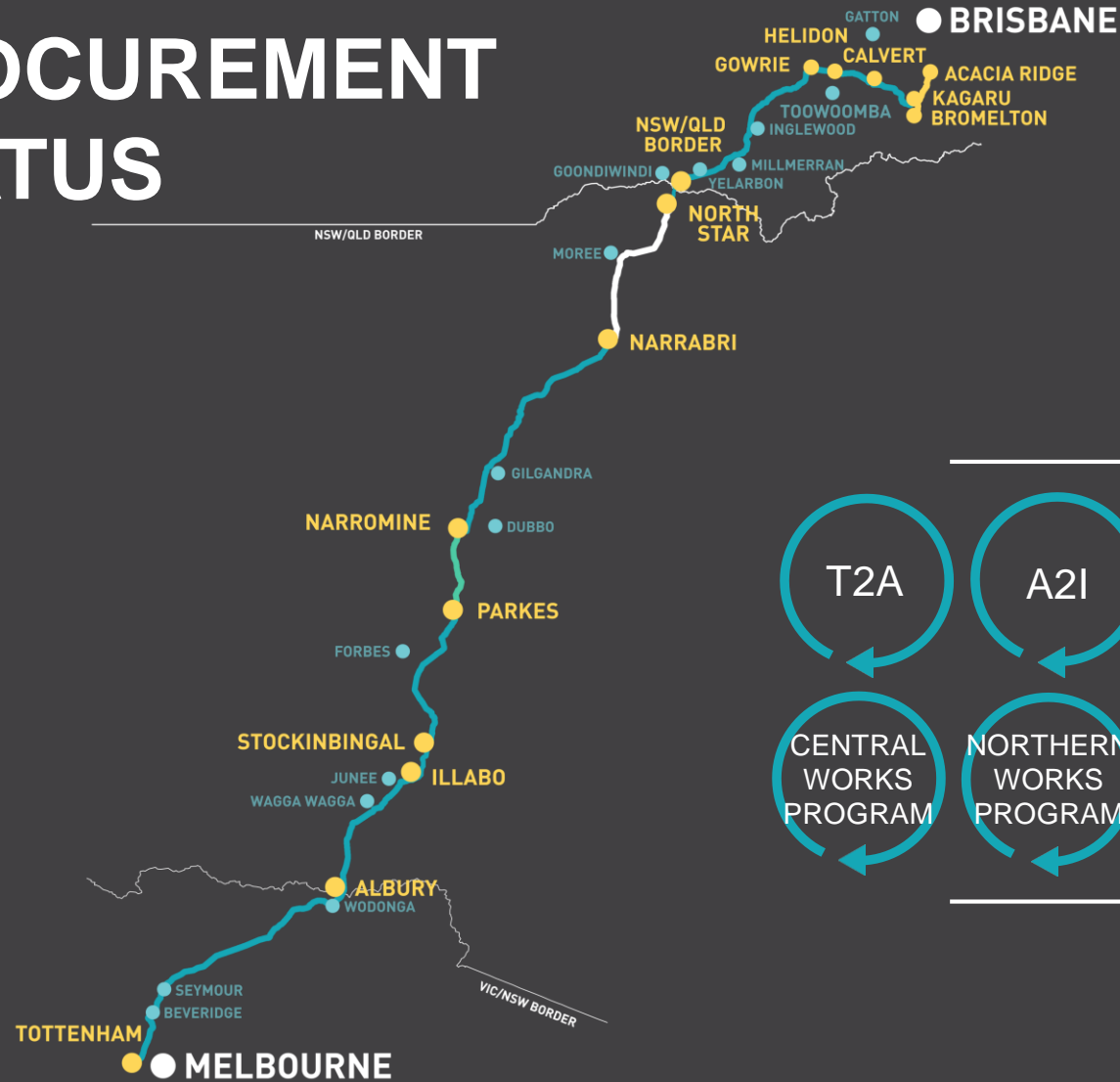
Segment	Calvert to Kagaru	Helidon to Calvert	Gowrie to Helidon
Works Package	Gowrie to Helidon		
Delivery Model	PPP		



CURRENT STATE OF PLAY

Construction work, Narrabri to North Star section – August 2021

INLAND RAIL PROCUREMENT STATUS



ARTC INLAND RAIL



COMPLETE



PROJECTS IN
DELIVERY



PROJECTS IN
PROCUREMENT



PROJECTS
YET TO BE
PROCURED

NEW SOUTH WALES

NARRABRI TO NORTH STAR

- + Construction contract for phase one awarded to Trans4m Rail – November 2020
- + 500 direct jobs from Trans4m Rail, plus additional jobs for businesses in the regions
- + IS Rating of 'excellent' verified for design of Narrabri to North Star Phase 1
- + Improved telecommunications infrastructure announced last month
- + Narrabri Shire Council progressing industrial and logistics hub – Inland Port
- + Moree Special Activation Precinct development underway in conjunction with NSW Government and Moree Plains Shire Council



First grain train running on 29km of upgraded track on the Narrabri to North Star section of Inland Rail - 1 November 2021

COMMUNITY BENEFITS

NARRABRI TO NORTH STAR Phase 1

September 2020
to September 2021



746

PEOPLE

have worked on the project
since September 2020



111

of whom are
Indigenous

231

LOCAL
RESIDENTS

have worked on the project

65

of whom are local
and Indigenous

176

people employed
for 26 weeks or over
for a minimum of
15 hours a week

SUSTAINABLE JOBS

45

TRADESPEOPLE
EMPLOYED



73

WOMEN EMPLOYED



118

local businesses
have supplied to
the project

9

Indigenous
businesses
Australia-wide

\$45.8M

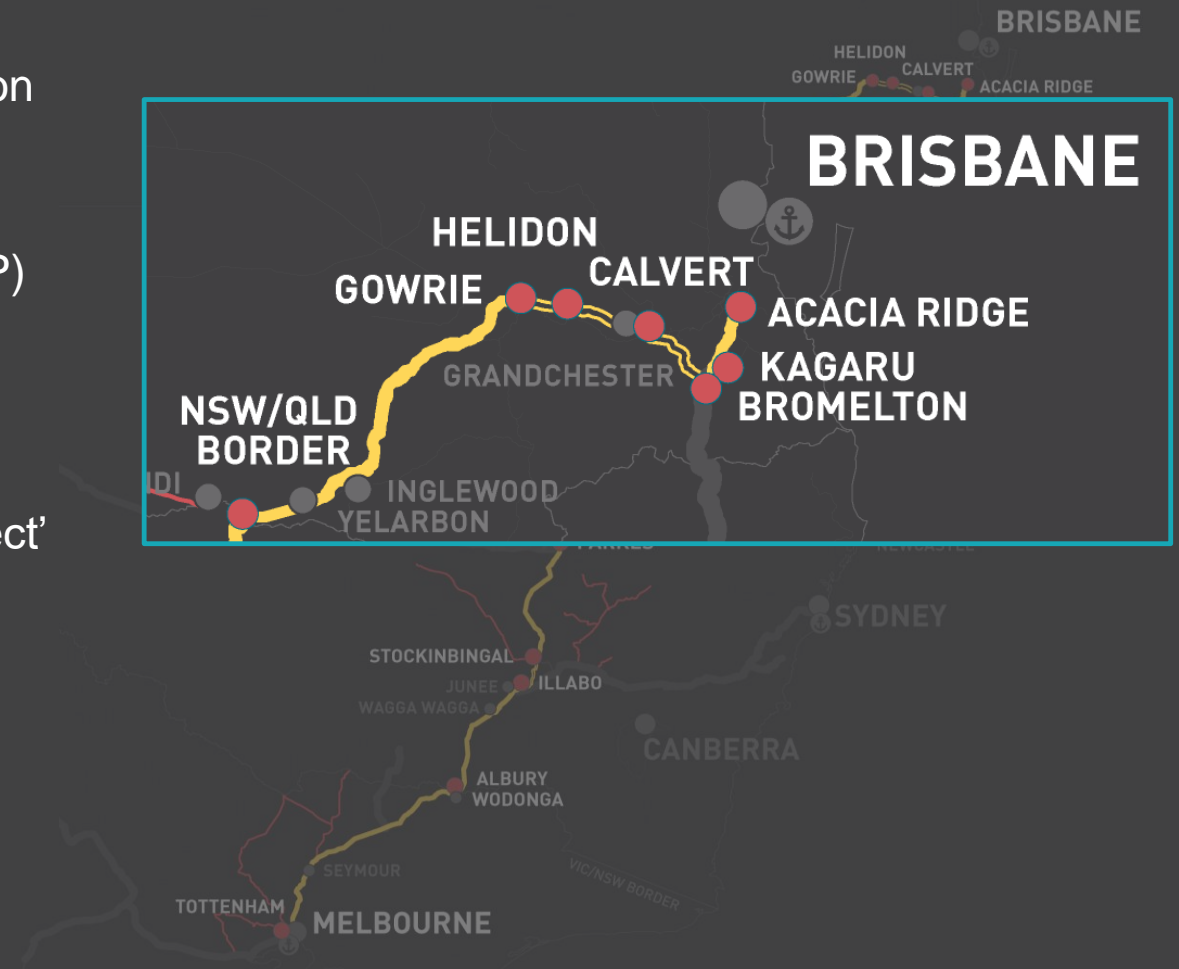
total spend
with local
businesses

\$3.7M

total spend with
Indigenous businesses
Australia-wide

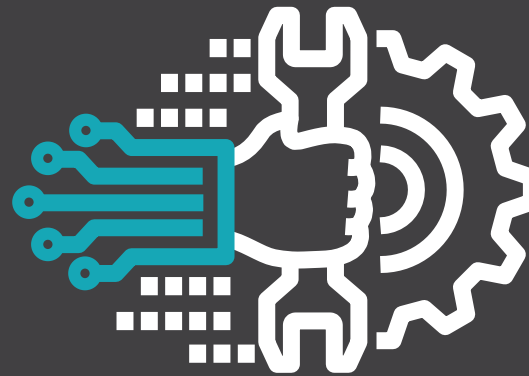
QUEENSLAND

- + Expected to boost potential GSP by up to \$7.8 Billion over first 50 years of operation
- + 128km section from Gowrie to Kagaru will be delivered through a Public Private Partnership (PPP)
- + Gowrie to Helidon draft Environmental Impact Statement public display closed last month
- + Coordinator-General decided not to declare the Kagaru to Acacia Ridge project a 'coordinated project'
- + Federal and Queensland Governments examining terminal or intermodal facility in Acacia Ridge
- + Northern Civil Works Program preferred proponent announced – BHQ joint venture



WE'VE AWARDED OVER
\$2B OF WORKS
(SINCE THE PROGRAM BEGAN)

AND HAVE OVER **\$8B**
IN PROCUREMENT



More than **1,600 contracts** have been awarded to more than **400 suppliers** spanning
110 local government areas across, every state and territory in Australia

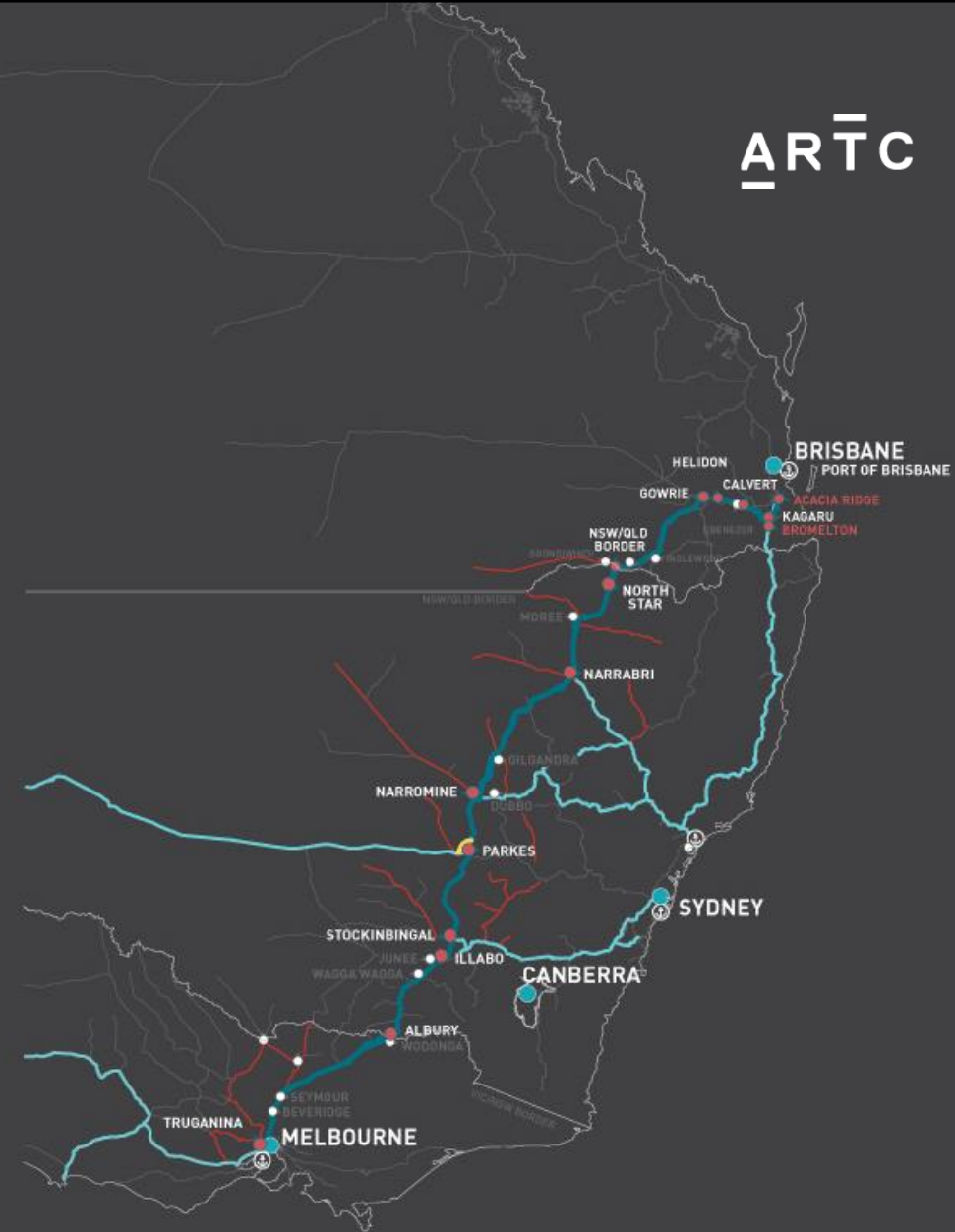
DOING BUSINESS WITH INLAND RAIL



inlandrail.com.au/suppliers

WE NEED TO WORK TOGETHER TO MAXIMISE THE VALUE

- + Better connections to state Rail Networks
- + New enterprise opportunities
- + Intermodal access along the alignment
- + Intermodal terminals for Brisbane and Melbourne
- + Enhanced port connections (Melbourne + Brisbane) be determined (separate to Inland Rail scope)



CATALYSING THE SUPPLY CHAIN

- + Australian Government helping identify investment opportunities
- + Committed \$44 million for business case support to help industry, local operators, governments and the community investigate proposed ideas to enhance the connection to and take advantage of long-term benefits of Inland Rail
- + 35 successful project proposals announced across two rounds



Australian Government

**Department of Infrastructure, Transport,
Regional Development and Communications**

inlandrail.gov.au/for-business/interface-improvement-program

PRIVATE SECTOR INVESTMENT



SCT Logistics hub, Albury



Pacific National intermodal hub, Parkes



Wagner Corporation rail-road-air intermodal hub, Toowoomba



InterLink SQ Freight and Logistics Hub, Toowoomba

THANK YOU

ARTC

INLAND
RAIL

An Australian Government Initiative