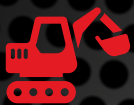




# MOVING EARTH FOR A BRIGHTER FUTURE.

## CAPABILITY STATEMENT



Equipment Hire



Service & Repair



Parts Supply

# WELCOME TO SMH EQUIPMENT.

## ABOUT US

With over 18 years' experience in heavy equipment, we have a team of highly skilled workshop diesel fitters, field service technicians and support team members driving our operations.

We have established partnerships with reliable suppliers and contractors to guarantee to get the job done right and to a quality we are proud of.

With locations in both Mount Isa and Townsville, we can service the Central/West region and Eastern Seaboard of the North Queensland region.

## MISSION

Our mission is to help regional businesses thrive by enabling them to deliver sustainable infrastructure projects efficiently and profitably. We do this by aligning with a company's vision and strategy to be their trusted rental supplier of high-performance, well-maintained, and technology-advanced heavy earthmoving equipment.

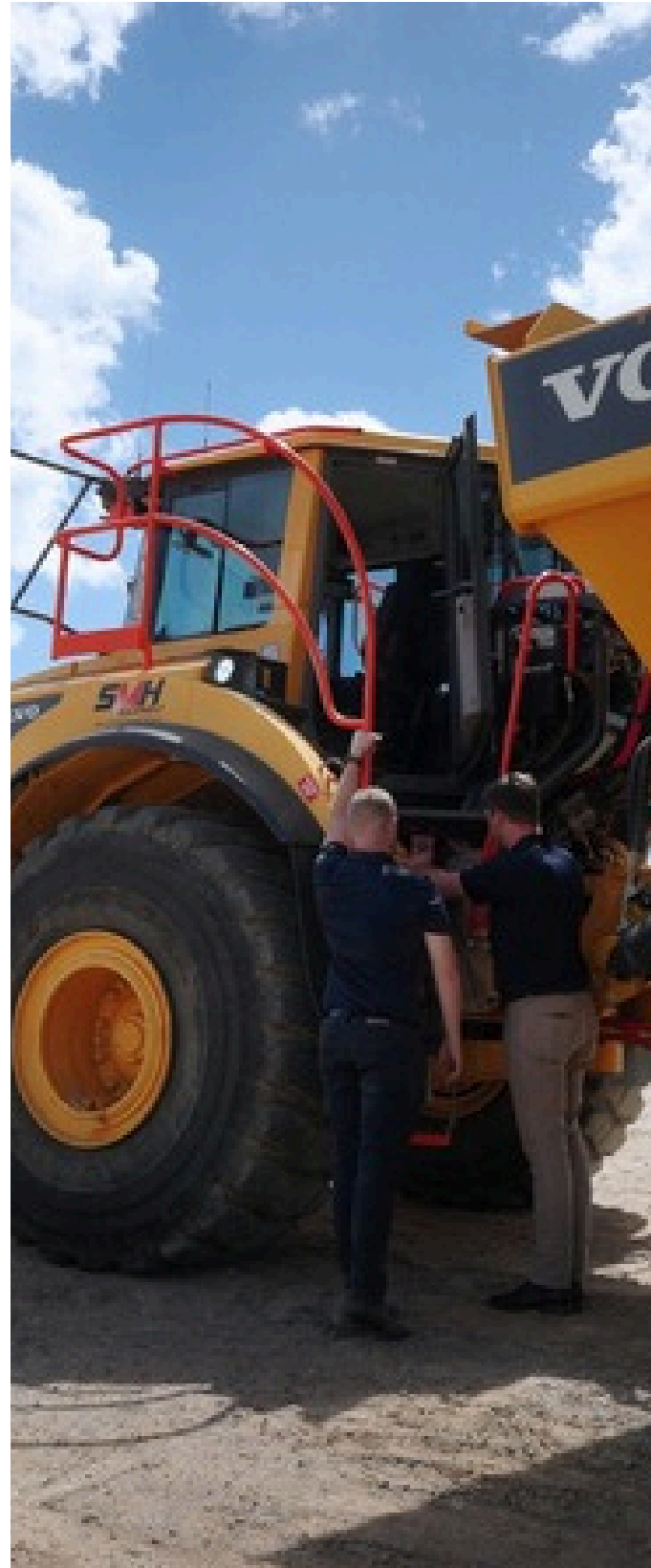
Our top-tier customer service delivered by our team and commitment to building clients' business success make SMH Equipment the leading rental supplier of heavy earthmoving machinery in the Central/West and East Coast of North Queensland.

## SERVICES

We offer comprehensive services, including heavy earthmoving equipment rental, servicing and part supply.

Our goal is to provide reliable and high-quality solutions that meet the specific needs of our customers. We specialise in the servicing, repairing and rebuilding heavy-duty earthmoving equipment - both on and off-site. With no job too big or small, you can depend on SMH.

## SOLUTIONS TO KEEP YOU MOVING.



# OUR BRAND. SMH EQUIPMENT.

WATCH OUR COMPANY VIDEO (  ON VIDEO -  YOUTUBE )







We have been using SMH for the supply of large civil works gear since early 2023. The gear provided by SMH has always exceeded our expectations along with the service provided by the team.”

— Nasser, Shamrock Civil



## OUR CAPABILITIES



### EQUIPMENT FLEET

With over 70 heavy earthmoving machines, including state-of-the-art equipment, we offer diverse options to meet your specific project requirements.

### HEAVY MACHINERY

Our earthmoving equipment is well-maintained by our highly skilled and dedicated team, minimising downtime and maximising productivity on your worksite or project.

### CUSTOMISED SOLUTIONS

As a family-owned and operated business, we understand the importance of tailoring our services to meet your unique needs. We offer flexible rental options and customised agreements to ensure a mutually beneficial partnership.

### FULL-SERVICE APPROACH

We go beyond equipment rental. Our comprehensive services include equipment servicing, preventative maintenance, and personalised advice on industry trends and best practices.

### COMMITMENT TO SUSTAINABILITY

By investing in the latest technology and eco-compliant machinery, we help you achieve your environmental goals while optimising performance.

# WHY CHOOSE SMH EQUIPMENT?

## RELIABILITY

Our state-of-the-art equipment and strict maintenance protocols ensure that you can rely on us for minimised interruptions in your operations and efficient project delivery.

## CUSTOMER FOCUS

We prioritise your satisfaction by providing exceptional customer service, personalised attention, and timely support throughout our partnership. Industry Experience: With over 16 years of experience, we have built a strong reputation in the industry, earning the trust of our clients and becoming a top choice for equipment solutions.

## COST-EFFECTIVENESS

Our competitive pricing and flexible rental solutions help you optimise your project budget without compromising on quality or performance.

## COMMITMENT TO SAFETY

Safety is paramount in our operations. We adhere to the highest safety standards and ensure that our operators are experienced professionals who prioritise your team's and worksite's well-being.

Partner with SMH Equipment today and experience the difference in quality, reliability, and service. Contact us to discuss your project needs, and let us tailor a solution that drives your success.



“

We have been using SMH Equipment on our mine site for over 5 years now, and their machinery and service is second to none!

We are able to have fitters on call for maintenance and servicing at any time of the day or night.”

— Damian, Austral Resources





# OUR EXPERIENCE & PROJECTS

We have successfully completed numerous projects, delivering exceptional results for our clients.

Our expertise spans a wide range of sectors, including mining, construction and civil engineering. Some notable projects we have been involved in include:

## **MOUNT ISA MINES - CRUSHING & TAILINGS PROJECTS**

We provided a comprehensive fleet package to Mount Isa Mine's projects, including loaders, compaction equipment, articulated haulers and watercarts - to support their daily operational requirements.

## **EQ RESOURCES - MT CARBINE**

We provided a tailored fleet package to EQ Resources for the Mount Carbine Project - including dozers and articulated haulers, to support extraction and stockpile management.





# OUR FACILITIES



## TOWNSVILLE

46 Kupfer Drive,  
Roseneath QLD 4811

## MOUNT ISA

49 Northridge Road,  
Mount Isa QLD 4825





## OUR VISION

# MOVING EARTH FOR A BRIGHTER FUTURE.

## OUR MISSION

**OUR MISSION IS TO ALIGN WITH OUR CLIENTS  
AND ENABLE THEM TO DELIVER SUSTAINABLE  
INFRASTRUCTURE TO OUR NATION.**

Our high-performing team is committed to providing top-tier customer service and helping build our clients' businesses through quality education, advice and customised rental and service agreements.

We are a forward-thinking, growing company that aligns our asset purchases with advancements in sustainable technology, ensuring we are an integral part of helping our clients build for tomorrow's Australia.





**CENSORED**

**COMING  
SOON.**

**Dry hire, reimagined.**



TOWNSVILLE  
46 Kupfer Drive,  
Roseneath QLD 4811

MOUNT ISA  
49 Northridge Road,  
Mount Isa QLD 4825

[www.smhequipment.com.au](http://www.smhequipment.com.au) | [admin@smhequipment.com.au](mailto:admin@smhequipment.com.au)

07 4743 6299 | ABN: 37 137 211 048 | ACN: 137 211 048